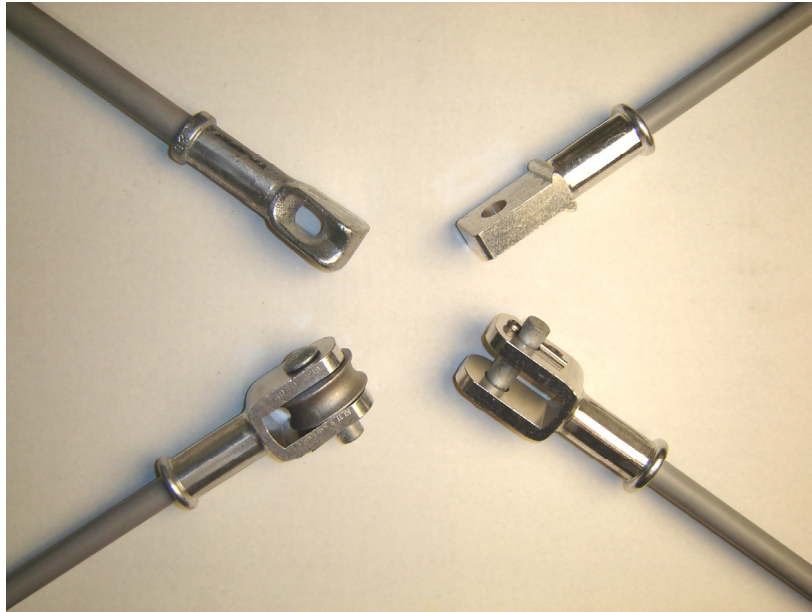




**K-LINE INSULATORS LIMITED**  
TORONTO, ONTARIO, CANADA

# Catalogue GI

## Silicone Guy Strain Insulators



Safety codes mandate the electrical strength of Guy Strain Insulators have a dry flashover voltage at least twice the voltage to ground of the highest voltage supply circuit with which the guy could come in contact, and a wet flashover equal to the highest voltage between any two conductors. When using porcelain, two or more insulators are usually needed to comply with these requirements.

Fiberglass Guy Strain Insulators so located that there is a possibility of contact with the supply conductors are prone to electrical tracking and failure. Paint coatings are easily removed in handling, and by weathering, and do not adequately protect the rod. Unprotected fiberglass core rod exposed to the elements can fail as a result of brittle fracture.

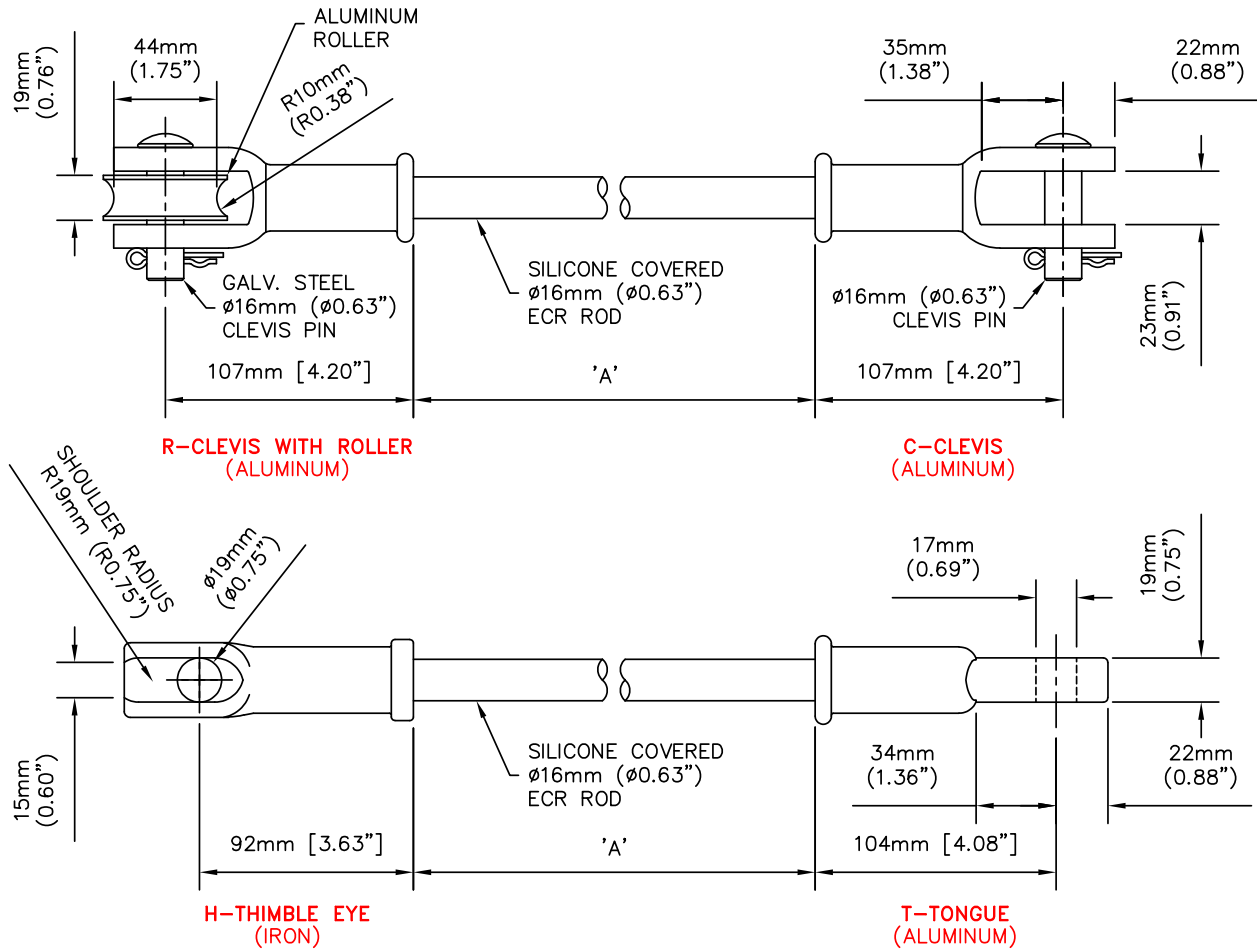
**K-LINE INSULATORS LIMITED (KLI)** Guy Strain Insulators are available with various end fittings and in various lengths. They are protected from the environment including the effects of voltage, ultra-violet rays and acid rain by a fully bonded, electrically track-free, and impenetrable silicone rubber sheath. The electrical and mechanical requirements of the safety codes are easily met by **KLI** Silicone Guy Strain Insulators. Each assembled insulator is proof tested, and permanently marked to show the date of test.

**K-LINE INSULATORS LIMITED** is registered to ISO 9001 Quality Systems.



ISO9001  
SAI GLOBAL  
FILE No. 000117

## GUY STRAIN INSULATORS



## TECHNICAL DATA

Catalogue Number**	CSA Class	Insulated Length A**	Low Frequency Flashover		Specified Mechanical Load (SML)	Routine Test Load (RTL)	Specified Torsional Load (ST <sub>0</sub> L)	Approx. Weight
			Dry	Wet				
			kV	kV				
KL11	GI30	280 (11)	120	65	100 (22,500)	50 (11,250)	56 (42)	0.6 (1.3)
KL24	GI60	610 (24)	240	150	100 (22,500)	50 (11,250)	56 (42)	0.7 (1.5)
KL36	GI90	910 (36)	340	240	100 (22,500)	50 (11,250)	56 (42)	0.9 (2.0)
KL54	GI140	1370 (54)	505	360	100 (22,500)	50 (11,250)	56 (42)	1.5 (3.3)
KL78	GI200	1980 (78)	810	505	100 (22,500)	50 (11,250)	56 (42)	2.0 (4.4)
KL96	N/A	2438 (96)	1030	615	100 (22,500)	50 (11,250)	56 (42)	2.5 (5.5)

\* To catalogue number, add suffix **CTS** for Clevis-Tongue, **CCS** for Clevis-Clevis, **CRS** for Clevis-Roller, **RRS** for Roller-Roller, or **HHSF** for Thimble Eye- Thimble Eye, **T** for Tongue, (other custom fittings can be accommodated).

Other lengths are available on request.

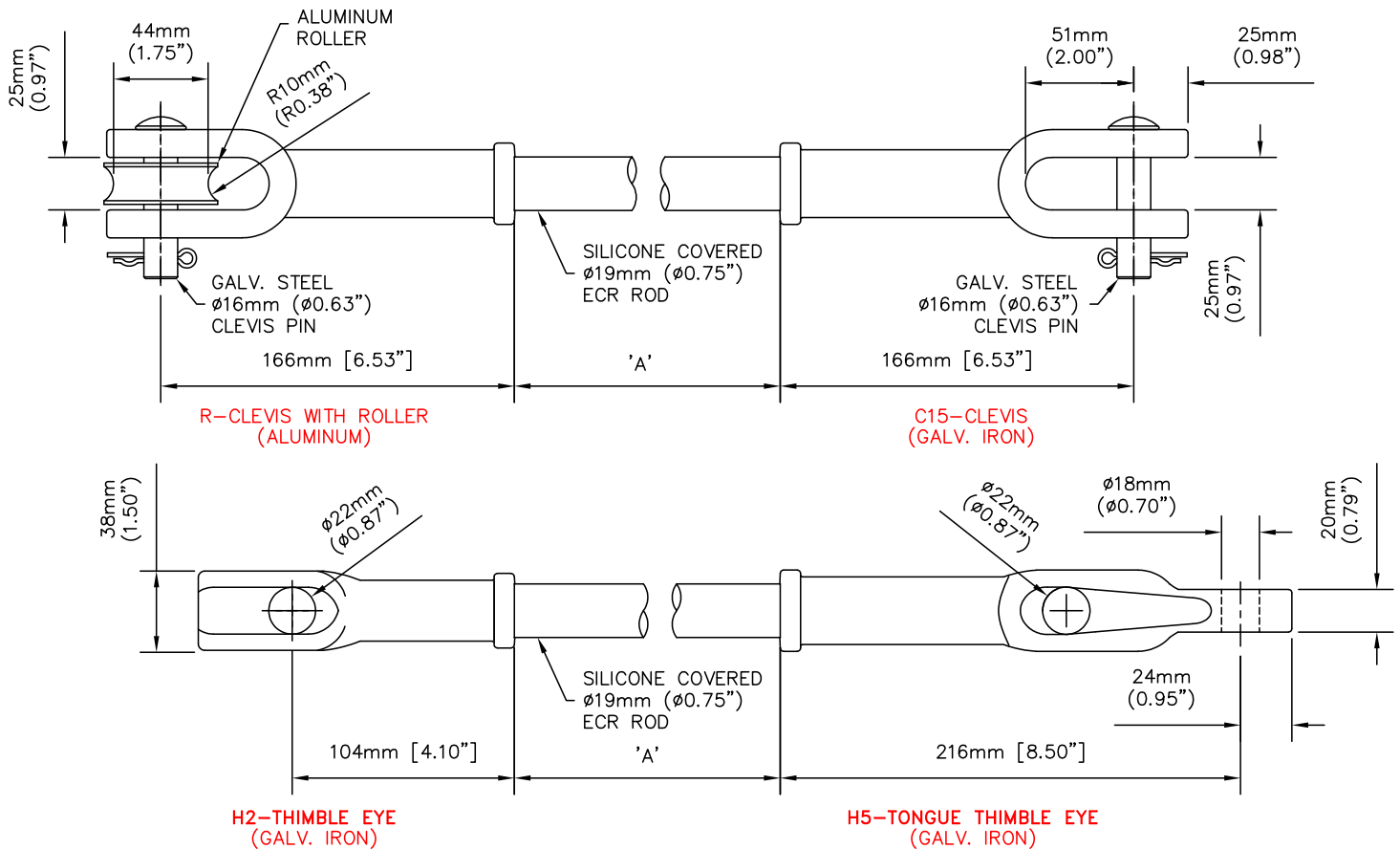


### K-LINE INSULATORS LIMITED

50 Passmore Avenue, Toronto, Ontario, Canada M1V 4T1

• Tel.: (416) 292-2008 • E-Mail: [insulators@k-line.net](mailto:insulators@k-line.net) • Web Page: [www.k-line.net](http://www.k-line.net)

## GUY STRAIN INSULATORS



## TECHNICAL DATA

Catalogue Number**	CSA Class	Insulated Length A**	Low Frequency Flashover		Specified Mechanical Load (SML)	Routine Test Load (RTL)	Specified Torsional Load (ST <sub>0</sub> L)	Approx. Weight
			Dry	Wet				
			kV	kV				
KL11**S4	GI30	280 (11)	120	65	100 (22,500)	50 (11,250)	83 (62)	2.4 (5.2)
KL24**S4	GI60	610 (24)	240	150	100 (22,500)	50 (11,250)	83 (62)	2.7 (5.9)
KL36**S4	GI90	910 (36)	340	240	100 (22,500)	50 (11,250)	83 (62)	3.0 (6.5)
KL54**S4	GI140	1370 (54)	505	360	100 (22,500)	50 (11,250)	83 (62)	3.4 (7.5)
KL78**S4	GI200	1980 (78)	810	505	100 (22,500)	50 (11,250)	83 (62)	4.0 (8.7)
KL96**S4	N/A	2438 (96)	1030	615	100 (22,500)	50 (11,250)	83 (62)	4.4 (9.6)

\*\* To catalogue number, insert **C15** for clevis, **H2** for Thimble Eye, **H5** for Tongue Thimble Eye, **R** for Clevis with Roller, (other custom fittings can be accommodated).

Other lengths are available on request.

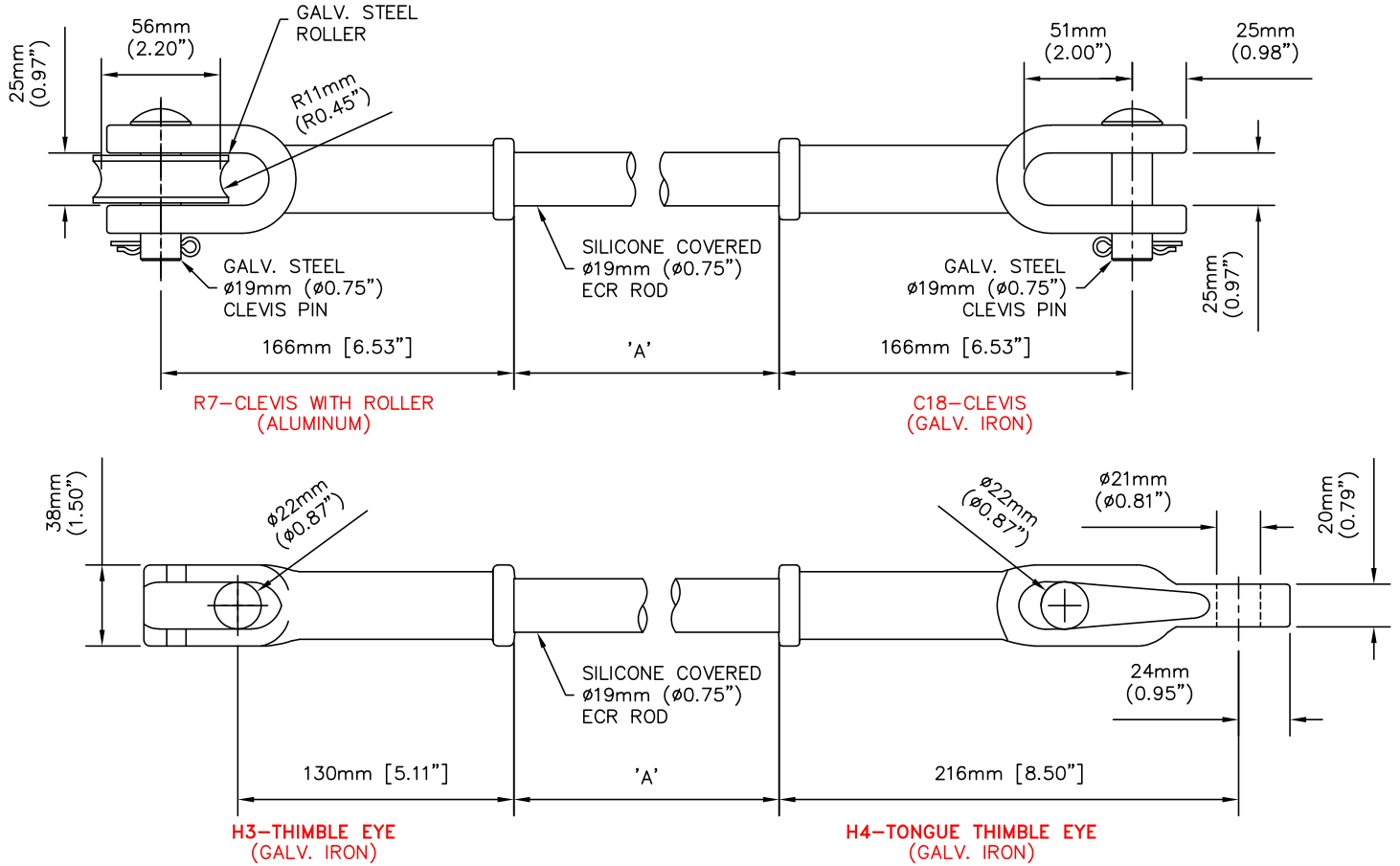


### K-LINE INSULATORS LIMITED

50 Passmore Avenue, Toronto, Ontario, Canada M1V 4T1

• Tel.: (416) 292-2008 • E-Mail: [insulators@k-line.net](mailto:insulators@k-line.net) • Web Page: [www.k-line.net](http://www.k-line.net)

## GUY STRAIN INSULATORS



## TECHNICAL DATA

Catalogue Number**	CSA Class	Insulated Length A**	Low Frequency Flashover		Specified Mechanical Load (SML)	Routine Test Load (RTL)	Specified Torsional Load (ST <sub>o</sub> L)	Approx. Weight
			Dry	Wet				
			mm (in)	kV				
KL11**S4	GI30	280 (11)	120	65	160 (36,000)	80 (18,000)	83 (62)	3.0 (6.5)
KL24**S4	GI60	610 (24)	240	150	160 (36,000)	80 (18,000)	83 (62)	3.2 (7.0)
KL36**S4	GI90	910 (36)	340	240	160 (36,000)	80 (18,000)	83 (62)	3.5 (7.6)
KL54**S4	GI140	1370 (54)	505	360	160 (36,000)	80 (18,000)	83 (62)	3.9 (8.6)
KL78**S4	GI200	1980 (78)	810	505	160 (36,000)	80 (18,000)	83 (62)	4.5 (9.8)
KL96**S4	N/A	2438 (96)	1030	615	160 (36,000)	80 (18,000)	83 (62)	4.8 (10.7)

\*\* To catalogue number, insert **C18** for clevis, **H3** for Thimble Eye, **H4** for Tongue Thimble Eye, **R7** for Clevis with Roller, (other custom fittings can be accommodated).

Other lengths are available on request.



### K-LINE INSULATORS LIMITED

50 Passmore Avenue, Toronto, Ontario, Canada M1V 4T1

• Tel.: (416) 292-2008 • E-Mail: [insulators@k-line.net](mailto:insulators@k-line.net) • Web Page: [www.k-line.net](http://www.k-line.net)